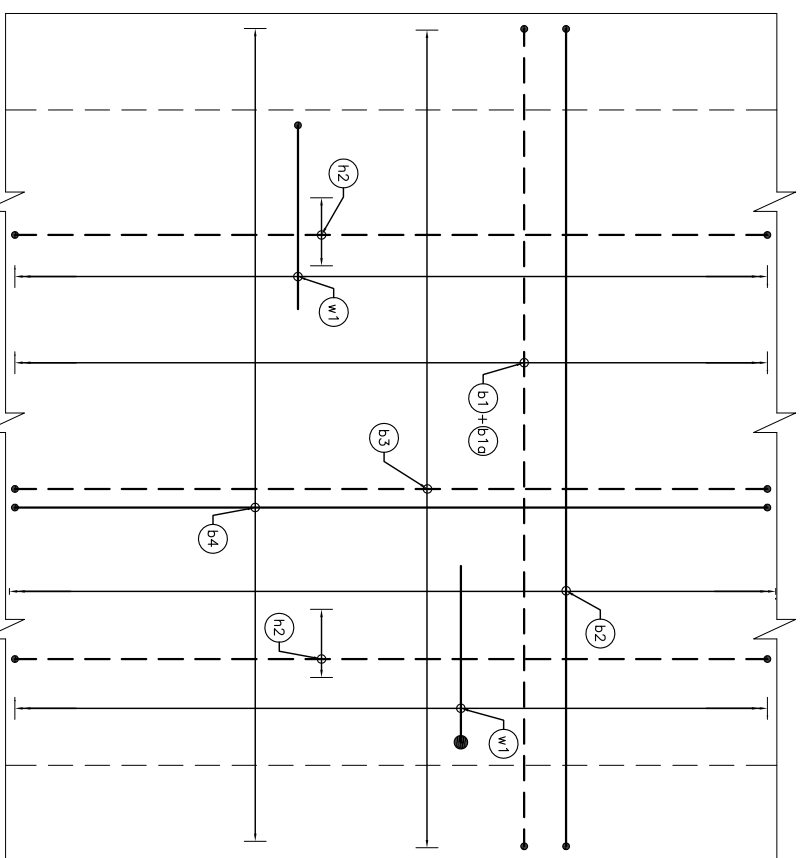
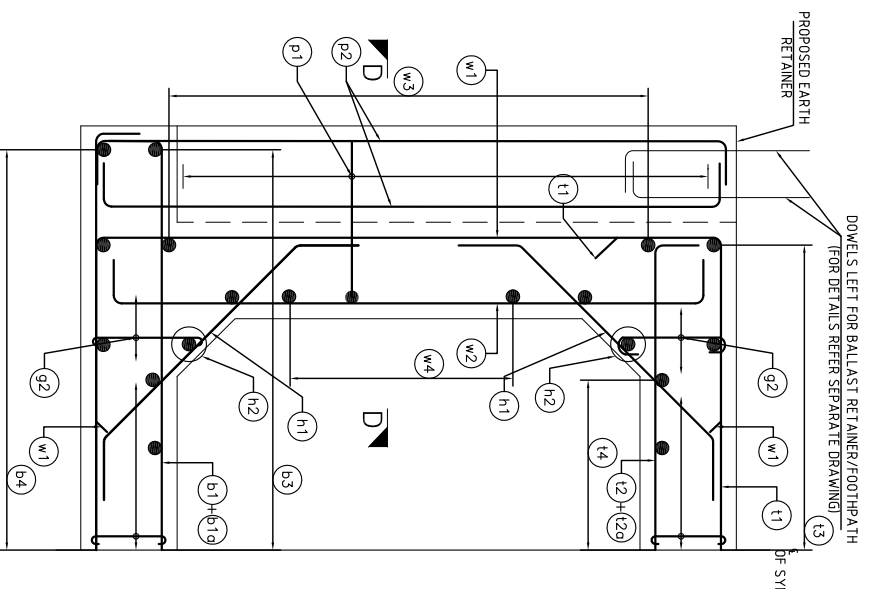


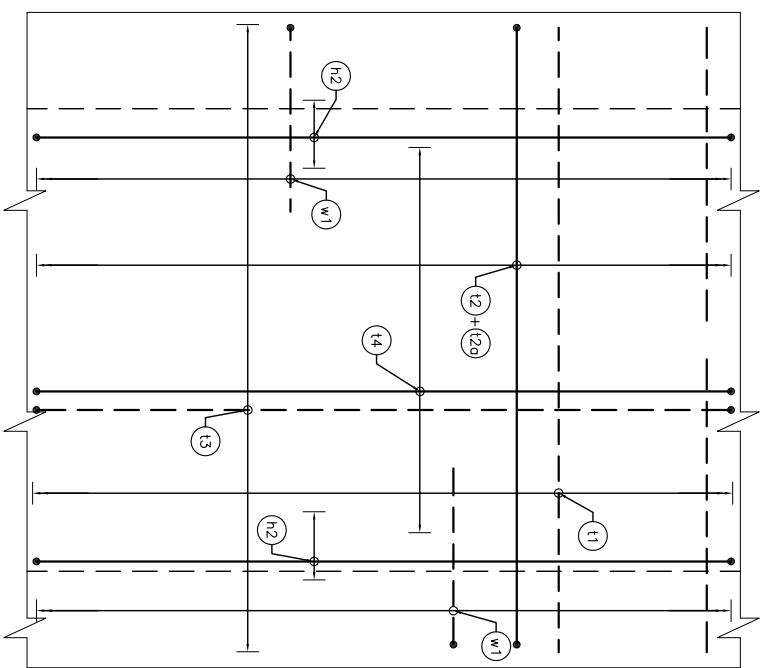
REINFORCEMENT DETAILS



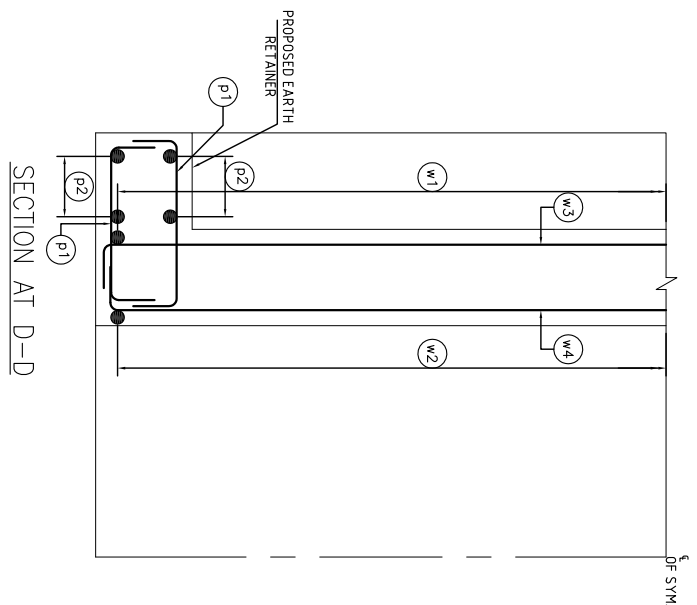
PLAN OF BOTTOM SLAB  
(HAUNCH BARS NOT SHOWN IN PLAN)



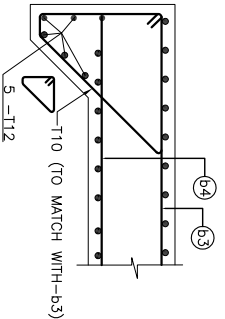
REINFORCEMENT DETAILS  
(CROSS SECTION AT EDGE)



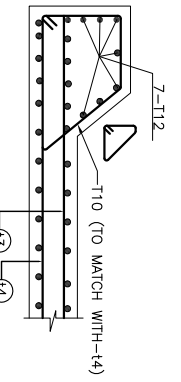
PLAN OF TOP SLAB  
(HAUNCH BARS NOT SHOWN IN PLAN)



SECTION AT D-D



REINFORCEMENT DETAIL OF BOTTOM SLAB KEY  
(DETAIL 'Y' AS PER GAD)  
(SCALE - 1:20)



REINFORCEMENT DETAIL OF TOP SLAB EARTH RETAINER  
(DETAIL 'X' AS PER GAD)  
(SCALE - 1:20)

NOTES:-

1. ALL DIMENSIONS ARE IN MILLIMETERS AND LEVELS ARE IN METERS UNLESS OTHERWISE SPECIFIED.
2. DIMENSIONS ARE NOT TO BE SCALED. ONLY WRITTEN DIMENSIONS SHALL BE FOLLOWED.
3. EXPOSURE CONDITION - MODERATE
4. HIGH YIELD STRENGTH DEFORMED / THERMO MECHANICAL TREATED (TMT) BAR OF GRADE Fe-500 SATISFYING THE REQUIREMENT OF IS-1786-1985 SHALL BE USED AS REINFORCEMENT.
5. LAPPING OF BARS SHOULD BE MINIMISED AND WHEREVER NECESSARY LAPPING SHALL BE STAGGERED WITH CENTER TO CENTER OF LAP SPLICES NOT LESS THAN 13 TIMES THE LAP LENGTH. MINIMUM LENGTH OF LAP SHALL BE (65d) OR (25\*d+150) (WHICHEVER IS MAXIMUM) WHERE 'd' IS DIAMETER OF SMALLER BAR OF THE TWO BARS BEING LAPPED.
6. GRADE OF CONCRETE - M35  
GRADE OF STEEL - FE500  
CLEAR COVER FOR EARTH FACE AS - 50mm  
FOR OTHER FACE AS - 50mm

SCHEDULE OF REINFORCEMENT (BOX)

BAR MARK	BAR SHAPE	BAR DIA	SPACING	a	b	c
t1		10	200mm e/c	400	1600	400
h2		10	200mm e/c	150	1600	150
h1		10	200mm e/c	150	1600	150
t3		10	200mm e/c	L1-100	-	-
t4		10	200mm e/c	L1-100	-	-
b1		10	200mm e/c	150	2100	150
b10		10	200mm e/c	150	2100	150
b2		10	200mm e/c	150	2100	150
b3		10	200mm e/c	L1-100	-	-
b4		10	200mm e/c	L1-100	-	-
w1		12	200mm e/c	500	1600	500
w2		12	200mm e/c	150	1600	150
w3		10	200mm e/c	L1-100	-	-
w4		10	200mm e/c	L1-100	-	-
h1		10	200mm e/c	100	780	100
h2		10	200mm e/c	L1-100	-	-
g1		10	200mm ALONG LENGTH AND 200mm ALONG BARREL	100	150	-
g2		10	200mm ALONG LENGTH AND 200mm ALONG BARREL	100	VARIES	-
p1		8	230mm e/c	150	400	150
p2		8	2 NOS EACH SIDE	150	1600	150

LEGEND

	BOTTOM BAR
	TOP BAR

REV/NO	DATE	STATUS	DESCRIPTION	DESIGNED	DRAWN	CHECK	DESIGN COMS
C							
B	22/03/16	P	REVISED AS PER PLAN & PROFILE	SH	SS	KSN	ASV
A	11/08/15	P	REVISED AS PER PLAN & PROFILE	AOS	SS	SPD	ASV
0	21/08/14	P	FIRST SUBMISSION	AOS	SS	SPD	ASV



DEDICATED FREIGHT CORRIDOR CORPORATION OF INDIA LTD.  
EASTERN CORRIDOR



PM	CPM	RE	ICT / PMC	TL	AMM	DY CPM	CPM	GM
IL & FS Engg-GPT JV								

SCALE :	N.T.S.	DFCCIL DRG.NO	ASCI/FS-GPT/DFCC-EC/MNBR/721/102	REVISION	B
PROJECT :	Design & Construction of Rail Flyover Near Ganjithwaja on Lumposum Basis in different stretches between Dehri -on-Sone & Mughal Sarai of Eastern Dedicated Freight Corridor	DETAIL :	REINFORCEMENT DETAILS OF BRIDGE NO.721 CH-112+410.239(X1.20M) X1.20M RCC CAST-IN-SITU BOX	STATUS	P

**IL & FS Engg - GPT (JV)**  
Doper No. 8, 29/07/13/194E  
Small info Park, Cyber Towers, Road No. 2, Banjara Hills, Hyderabad-500033, India  
T: 40-40409333 Fax: No-91-40-40409444

**ASC InfraTech Pvt. Ltd.**  
H-37, 1st Floor, Sector-63, Noida - 201301 (U.P.) Tel: 0120-2628833-20 Fax: 120-26283253, Email: info@ascinfotech.com